

**Marubeni Ventures Announces Investment in Revelio Labs,
a Workforce Intelligence Company in the US****~ Enabling Better Understanding of Company and Industry Labor
Trends ~**

Marubeni Ventures Inc. announces its investment in Revelio Labs, Inc. (Headquarters: New York, CEO: Ben Zweig), which provides a “workforce intelligence” data platform in the US.

Revelio Labs was founded in 2018 and enables asset managers, corporate strategists, and HR persons to better understand a company’s workforce by collecting and enhancing labor-related data. Revelio Labs’ platform enables customers to uncover important trends within a company or industry, such as tenure, hiring trends, and competitive workforce movement, and has created a standard structure to unify job titles, skills, activities, and companies.

Revelio Labs has seen strong adoption across investment, corporate and academic use cases and is using the capital raised to enhance its sales team and develop its innovative product further. It is able to attract top data science and economic talent for the development of its platform and continues to add new data sources to provide further insights to customers.

Through this investment, Marubeni Ventures will support Revelio Labs’ further expansion and development.

About Revelio Labs

Headquarters: US, New York
URL: <https://www.reveliolabs.com/>
Founder & CEO: Ben Zweig

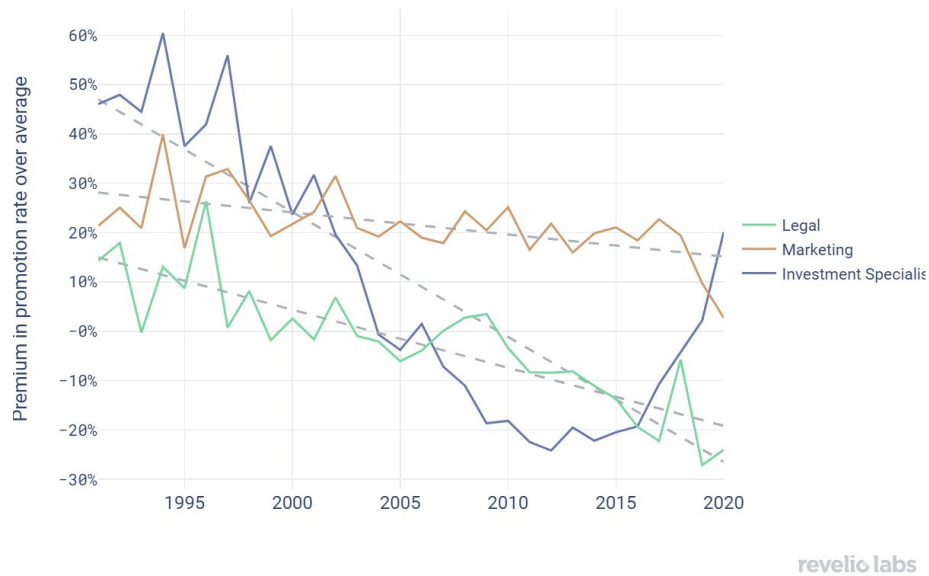
Shareholders: Barclay’s, Techstars, K20 Fund, NYU Ventures, BDMI BoxOne Ventures, DataFrame Ventures, 840 Venture Partners

About Marubeni Ventures

Marubeni Ventures was established as a Corporate Venture Capital firm (CVC) of Marubeni Corporation in June 2019 to support and accelerate the resolution of social and customer issues and deliver new value to society with collaboration with selected startups (URL: <https://www.marubeni-ventures.com/en/>).

Appendix: Examples of the analysis by Revelio Labs

These show the tendency that employees in Legal, Marketing, and Investment Specialist roles are on a downward trend in promotion while those in IT Project Manager, Operations Manager, and Client Services roles are on an upward trend.

Promotion to Senior Management: Roles On Downward Trend**Promotion to Senior Management: Roles On Upward Trend**